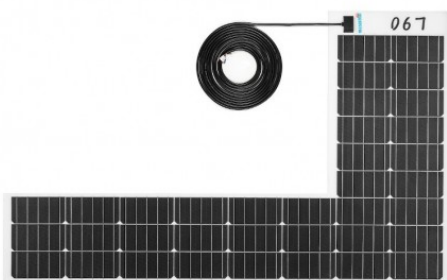




# MOSCATELLI E-VAN L90 SOLAR PANEL



## Product description:

### MOSCATELLI E-VAN L90 SOLAR PANEL 90W

MOSCATELLI E-VAN L90 90W is a solar panel designed to be used for Ducato VAN, in order to give the maximum yield with the use of as little space as possible.

With a maximum power of 90W, the new MOSCATELLI E-VAN L90 module proposed in size 130X82 CM solves many drawbacks that usually afflict fixed-mount solar panels installed on recreational vehicles, in particular the problem of encumbrance and the problem, very important on a means of transport, of weight.

MOSCATELLI E-VAN L90 also, compared to traditional models is a module consisting of monocrystalline silicon solar cells, which makes them more efficient, compact and durable than polycrystalline models. This unit has been designed to be applied on your Ducato without occupying the entire roof of the vehicle, leaving space for the windows positioned on it.

The high mechanical resistance allows the MOSCATELLI E-VAN 90W module not to be affected by jolts and vibrations, the supply is completed by the fixing kit for a practical use. The panel has an exclusive design that allows the installation without fear of wind resistance.

Thanks to this set of peculiarities the new MOSCATELLI E-VAN 90W photovoltaic modules guarantee a long life in full efficiency. the MOSCATELLI photovoltaic panel is complete with a 6 meter cable and supports.

### TECHNICAL CHARACTERISTICS PHOTOVOLTAIC PANEL MOSCATELLI E-VAN L90 90W

Rated power: 90W

Rated voltage: 18 V

Rated current : 5.00 A

Open circuit voltage: 21.6 V





Short circuit current: 5.45 A  
Maximum system voltage: 600 VDC  
Cell Type: Monocrystalline  
Cable: 6m  
Width: 1310 mm  
Length: 800 mm  
Weight: 2.95 Kg

Are you looking for a product with different characteristics? [HERE](#) you can find the entire range of MOSCATELLI and other specialized brands.

Images and technical data are not binding. Please always consult the technical data sheet issued by the manufacturer. Manel Service accepts no liability for any changes made by the manufacturer.

**Product features:**

Net power (kW): 90 W  
Length (mm):  
Width (mm): 800  
Cell composition: Monocrystalline 156x156 mm  
Weight (Kg): 2.95