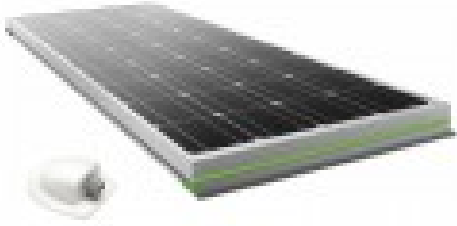




# MOSCATELLI MOOVE SP120 SOLAR PANEL



## Product description:

MOOVE MOSCATELLI MOOVE SP120 SOLAR PANEL 120W

MOSCATELLI MOOVE SP120 120W is a solar panel designed for use in vehicles and campers, particularly efficient with monocrystalline cells.

With a maximum power of 100W, the new MOSCATELLI MOOVE SP120 module, proposed in the dimensions 1522 x 518 x 55 mm, solves many drawbacks that usually afflict fixed-mount solar panels installed on recreational vehicles, in particular the problem of encumbrance and the problem, very important on a means of transport, of weight. With a weight contained in only 10.5 Kg the MOSCATELLI MOOVE 120W module is extremely light compared to a similar traditional solar panel that, mounted on the roof of the camper, generally weighs around 15 Kg.

MOSCATELLI MOOVE SP120 also, compared to traditional models is a module made of monocrystalline silicon solar cells, which makes them more efficient, compact and durable than polycrystalline models.

The high mechanical resistance allows the MOSCATELLI MOOVE 120W module not to be affected by jolts and vibrations. The supply is completed by the fixing kit for a practical use. The panel has an exclusive design that allows the installation without fear of wind resistance.

Thanks to this set of peculiarities the new MOSCATELLI MOOVE 120W photovoltaic modules guarantee a long life in full efficiency. the MOSCATELLI photovoltaic panel is complete with a 6 meter cable and supports.

TECHNICAL CHARACTERISTICS PHOTOVOLTAIC PANEL MOSCATELLI MOOVE SP120 120W

Rated power: 120W

Rated voltage: 18V





Rated current : 6.67A  
Open circuit voltage: 21.6V  
Short circuit current: 7.13A  
Maximum system voltage: 1000VDC  
Cell Type: Monocrystalline  
Cable: 6m  
Width: 518 mm  
Length: 1522 mm  
Height: 55 mm  
Weight: 10.5 Kg

Are you looking for a product with different characteristics? HERE you can find the entire range of MOSCATELLI MOOVE 100W and other specialized brands.

Images and technical data are not binding and subject to change by the manufacturer.

**Product features:**

Net power (kW): 120 W  
Length (mm): 1522  
Width (mm): 518  
Height (mm): 55  
Cell composition: Monocrystalline 156x156 mm  
Weight (Kg): 10.5