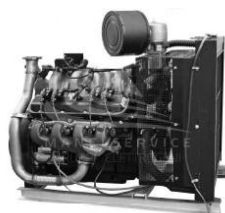


CGM 25NG GAS METANO - APERTO CON CENTRALINA MANUALE



Reference: CGM 90NG APERTO MANUALE /

Technical Sheet

Phase	Single phase / Three phase
Maximum power three phase (KW)	79
Continuous power three phase (KW)	72
Maximum power three phase (KVA)	99
Continuous power three phase (KVA)	90
Fuel	Natural Gas
Frequency (Hz)	50
Voltage (V)	230 / 400
Engine	General Motors RMG 9000
Engine rpm (rpm)	1500
Speed governor	Electronic
Starting system	Electric
Engine capacity (cm ³)	8850
Number cylinders	8
Cooling	Water
Alternator	Marelli, brushless
Poles	4
Bore x stroke (mm)	114.3 x 107.95
Natural Gas consumption (m ³ /h)	31.6 at 100% of the load
Length (mm)	2200
Width (mm)	1000

Height (mm)	2250
Dry weight (Kg)	1300
Silenced	No
Super silenced	No
ATS Switch device	No ATS
Voltage regulator	AVR
Engine manufacturer	General Motors
