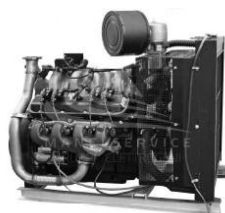


## CGM 25NG GAS METANO - APERTO CON CENTRALINA MANUALE



Reference: CGM 80NG APERTO AUTOMATICO /

### Technical Sheet

|   |                            |
|---|----------------------------|
| Phase                                       | Single phase / Three phase |
| Maximum power three phase (KW)              | 70.5                       |
| Continuous power three phase (KW)           | 64                         |
| Maximum power three phase (KVA)             | 88                         |
| Continuous power three phase (KVA)          | 80                         |
| Fuel  | Natural Gas                |
| Frequency (Hz)                              | 50                         |
| Voltage (V)                                 | 230 / 400                  |
| Engine                                      | General Motors RMG 8000    |
| Engine rpm (rpm)                            | 1500                       |
| Speed governor                              | Electronic                 |
| Starting system                             | Electric                   |
| Engine capacity (cm <sup>3</sup> )          | 7900                       |
| Number cylinders                            | 8                          |
| Cooling                                     | Water                      |
| Alternator                                  | Marelli, brushless         |
| Poles                                       | 4                          |
| Bore x stroke (mm)                          | 107.95 x 107.95            |
| Natural Gas consumption (m <sup>3</sup> /h) | 28.3 at 100% of the load   |
| Length (mm)                                 | 2200                       |
| Width (mm)                                  | 1000                       |

---

|                     |                |
|---------------------|----------------|
| Height (mm)         | 2250           |
| Dry weight (Kg)     | 1200           |
| Silenced            | No             |
| Super silenced      | No             |
| ATS Switch device   | Optional ATS   |
| Voltage regulator   | AVR            |
| Engine manufacturer | General Motors |

---