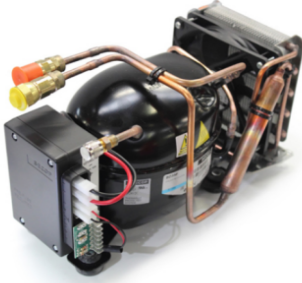


## VITRIFRIGO Refrigeration Unit ND35OR-V GR

Reference: G5200091.000



### VITRIFRIGO ND35OR-V GR refrigeration unit

VITRIFRIGO ND35OR-V GR refrigeration unit are designed for refrigerated compartments of up to 300 litres and freezer compartments of up to 100 litres. They are powered by 12/24 Vdc as standard and are supplied under nitrogen pressure.

VITRIFRIGO unit are available in two versions:

Standard version: powered at 12/24 Vdc without quick couplings.

Optional version: Powered at 12/24 Vdc - 100-240 Vac 50/60 Hz with quick couplings.

The standard version is the simplest and most convenient. It is ideal for applications where a 12/24 Vdc power supply is required, such as motorhomes, caravans and boats.

The optional version offers more flexibility. It can be used with a 12/24 Vdc or 100-240 Vac power supply. It is ideal for applications where a 100-240 Vac power supply is required, such as bars, restaurants and shops.

#### Technical Specifications VITRIFRIGO ND35OR-V GR refrigeration unit:

Standard equipment: 12/24Vdc without quick couplings

Optional equipment: 12/24Vdc - 100-240Vac 50/60Hz with quick couplings

Width: 275 mm

Height: 160 mm

Depth: 150 mm

Weight: 5 kg

These dimensions make them compact and easy to install.

VITRIFRIGO ND35OR-V GR refrigeration unit are made of high-quality materials and are designed for durability. They are a reliable and cost-effective choice for all applications requiring a refrigeration system.

VITRIFRIGO ND35OR-V GR refrigeration unit are the ideal solution for anyone looking for a reliable and versatile refrigeration system.

With a capacity of up to 300 litres, VITRIFRIGO ND35OR-V GR unit can meet the needs of any environment.

The compact dimensions of the VITRIFRIGO ND35OR-V GR unit make them easy to install and transport.

The high-quality materials used in the construction of the VITRIFRIGO ND35OR-V GR unit guarantee a long service life.

If you are looking for a product such as ND35OR-V GR refrigeration unit or with similar characteristics click [HERE](#).

Images and data are purely indicative.

## Technical Sheet

Length (mm)	150
Width (mm)	275
Height (mm)	160
Dry weight (Kg)	5
Standard equipment	12/24Vdc without quick couplings
Optional equipment	12/24Vdc - 100-240Vac 50/60Hz with quick couplings