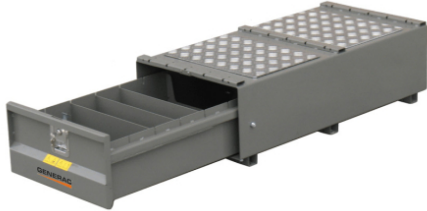


## GENERAC ATB-M1 ANTI-THEFT BOX 115 L



Reference: AS08000-0001GB /

### GENERAC ATB-M1 ANTI-THEFT BOX 115 L

The GENERAC ATB-M1 anti-theft box is ideal for anyone who needs to keep their tools handy at all times and keep them safe at the same time.

The burglarproof chest is equipped with a side drawer door, extremely spacious and practical access. The GENERAC ATB-M1 is compact but extremely capacious, thanks to its 115 l of internal volume.

The structure of the body is made of 2mm thick sheet metal, then painted with oven-baked polyurethane powder paint.

The security system with double lock does not allow the opening of the box in any way if not cutting in two the entire box.

The GENERAC ATB-M1 cannot be broken into in any way due to the lack of external padlocks and the impossibility of passing a crowbar through the slots of the chest.

The structure of the work crate is equipped with lifting pockets and a raised platform that allows it to be both nimbly forked by a transpallet or forklift and lifted by means of a crane, allowing you to easily transport all your equipment.

#### TECHNICAL FEATURES GENERAC ATB-M1

Capacity: 115 l  
Closing system: Concealed burglar-proof  
Doors: 1, side  
Width: 950 mm  
Length: 500 mm  
Height: 300 mm  
Weight: 63 Kg

Are you looking for a anti-theft box with different technical characteristics? [Here](#) you can find the full range of box Generac or other specialized brands.

Images and technical data are not binding and may be subject to revision by the manufacturer.

### Technical Sheet

Length (mm) 950

---

Width (mm)	500
Height (mm)	300
Dry weight (Kg)	63

---